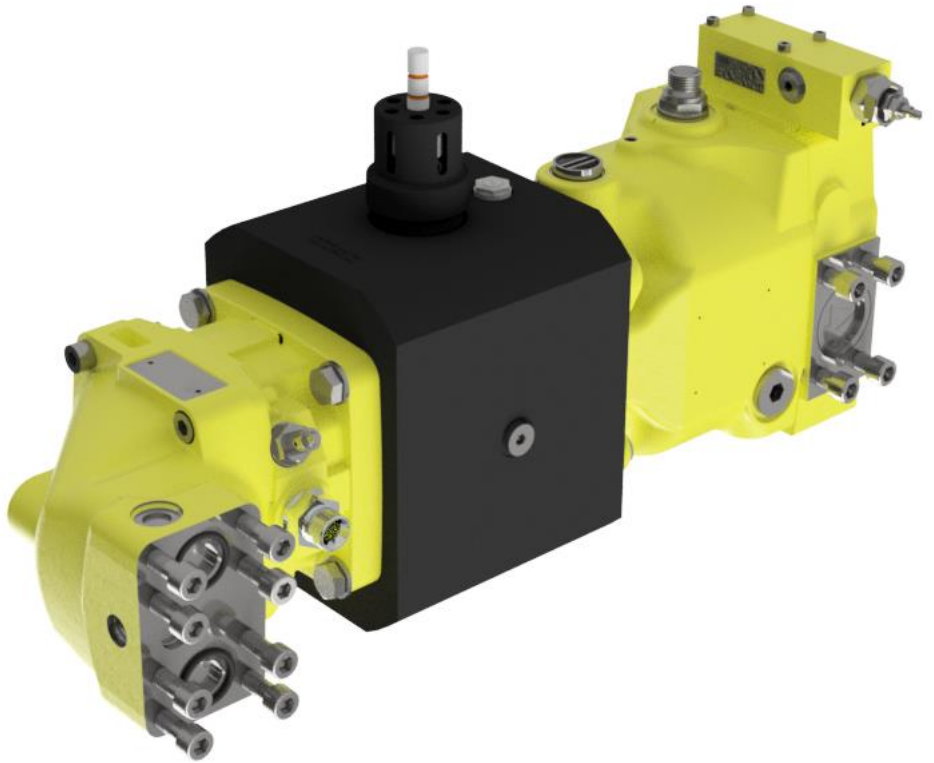


# DIRTY WORK PACK

46CC IHPU  
HIGH FLOW  
HYDRAULIC POWER UNIT



**The High Flow Dirty Work Pack Unit is used to reduce the risk of contamination in the main ROV hydraulic system. By using this equipment, you will get two completely separate oil circuits and avoid concerns about contamination in your hydraulic system.**

The Dirty Oil Pack is an Isolated Hydraulic Power Unit (IHPU) that can be easily incorporated into a ROV hydraulic system to provide an isolated hydraulic supply for driving tooling and equipment that may potentially otherwise cause contamination to the main ROV hydraulic supply.

Hook-up to the ROV is quick and simple by connecting a supply, return and drain line to a ROV valve pack function.

The DWP can be delivered as a complete unit with oil filters and reservoirs / compensators. The skid can be assembled as a backpack for rear end interface, or a belly skid for interface underneath the ROV.

## Typical Operations

- Subsea ROV Tooling
- Intervention Works
- Subsea Control Systems
- Injection Systems

## Features

- High Flow Version
- Subsea Tooling Universal Modular Interface
- High flow version
- Variable Pump
- Compact design
- Adjustable to customer requirements
- Rated to full ocean depth
- Allows auxiliary tools and equipment to be independent from the main hydraulic system
- Service and user friendly
- Remote pressure control option
- Customized pressure and flow setup
- Utilizes industry standard parts
- Up to 345 Bar / 5000PSI output pressure

# SPECIFICATIONS

## DIRTY WORK PACK

### General Technical Data

Product No.	102598	
Weight in air / submerged	KG	75Kg / 66Kg
Dimensions (mm)	(W x H x L)	214 x 308 x 593

### Hydraulic Technical Data

Pump Displacement	cm <sup>3</sup> /rev.	46	
Max. supply pressure	Bar (PSI)	345	(5000)
Max. supply flow	LPM (GPM)	168	(44.4)
Max. output flow @	Bar (PSI)	210	(3000)
Flow	LPM (GPM)	129	(13.2)

Efficiency is rated to 66%

### Interfaces

Motor Supply Port	A - 3/4" SAE Code 62 (6000PSI) ISO6162
Motor Return Port	B - 3/4" SAE Code 62 (6000PSI) ISO6162
Motor Drain Port	C - M22 x 1.5 Female
Pump Pressure Port	D - 1" SAE Code 62 (6000PSI) ISO6162
Pump Suction Port	E - 1-1/2" SAE Code 61 (3000PSI) ISO6162
Pump Drain Port	F - G 1/2" BSP Female
Pump Regulator PC Port	G - G 1/4" BSP Female
Bellhousing fill port	H - G 1/4" BSP Female

### What's in the box

- 102598 – Dirty Work Pack
- 102598 – Usermanual
- 109779 – Aluminum Transit Box

### Options and Accessories

- Compensator / Reservoir
- Pressure and Return Filters
- Proportional Pump Regulator
- Pump Trip Module
- Pump Flush Kit
- Hoses from ROV to DWP
- Spares Kit

