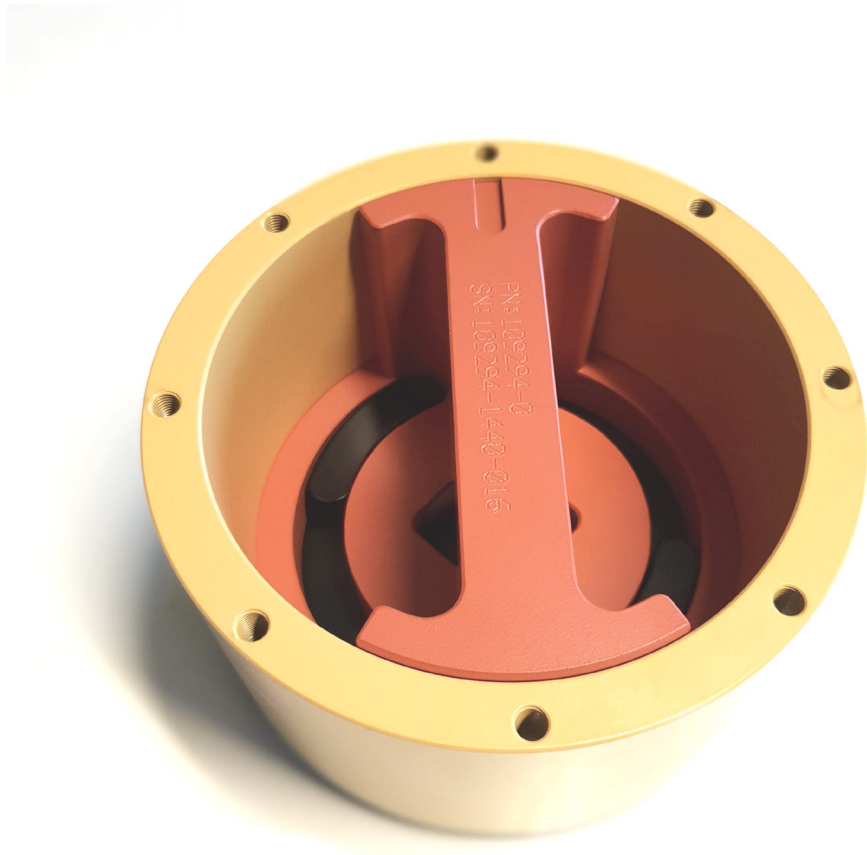


ROV OPERATED VALVE

PANEL
MOUNTED
ALU ACTUATOR VERSION



Our ROV Operated Valve is a field proven component used in subsea systems all over the world.

Available in a number of flow configurations and valve / port sizes.

The Envirex ROV Operated Rotary Control Valve are designed to meet the requirements for use in the most demanding harsh subsea environments. Our standard range of rotary control valves is available at pressure ratings up to 20,000PSI (1379Bar) and water depths to 3000 meters (10,000Ft).

Envirex can supply standard design or customer specified variations of ROV actuator interfaces

- ### Features
- Excess torque not transferred to valve stem
 - Stainless Steel Construction
 - Wide Range of fluid compatibility
 - Rated to 3000MSW
 - Service and user friendly
 - Custom design available
 - 2, 3 and 4 way valve types available

Typical Operations

- Intervention Workover System
- Subsea Control System
- Chemical Injection
- Subsea Tooling

SPECIFICATIONS

ROV OPERATED VALVES - ALU ACTUATOR VERSION

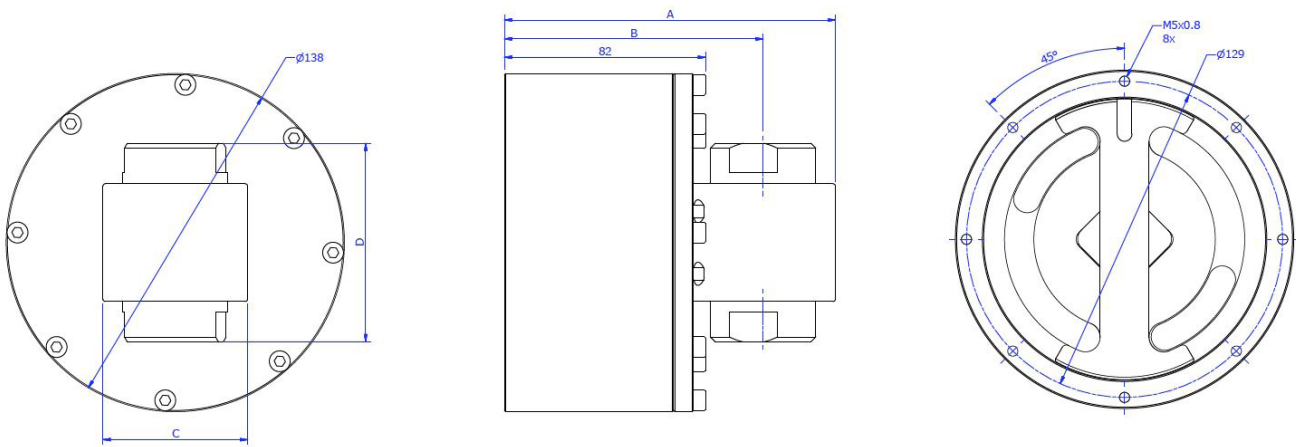
General Technical Specifications

Type	Panel Mounted ROV Operated Valve
Part Number	See selection table
Fluid	Water Glycol and mineral oil based subsea fluids
Operating Temperature	-10°C/ + 70°C (14°F / 158°F)

Materials

Body Material	Alu6082 (Xylan Surface Treated)
Valve Body Material	Stainless Steel

Dimensions



Type	A	B	C	D	E	Weight
Alu ROV Actuator - 1/4" Ball Valve 500Bar	135	104	54	72	1/4" BSP	4 Kg
Alu ROV Actuator - 3/8" Ball Valve 500Bar	135	104	54	72	3/8" BSP	4 Kg
Alu ROV Actuator - 1/2" Ball Valve 500Bar	140	105,5	59	81	1/2" BSP	4,3 Kg
Alu ROV Actuator - 3/4" Ball Valve 400Bar	155	114	74	98	3/4" BSP	5,6 Kg
Alu ROV Actuator - 1" Ball Valve 350Bar	164	118,5	83	106	1" BSP	6,4 Kg
Alu ROV Actuator - 1-1/4" Ball Valve 350Bar	180	126,5	99	127	1-1/4" BSP	8,2 Kg
Alu ROV Actuator - 1/4" - MP Valve 20K PSI	25,4	165	38,1	140	1/4" MP F	4,2 Kg
Alu ROV Actuator - 3/8" - MP Valve 20K PSI	25,4	165	38,1	140	3/8" MP F	4,2 Kg
Alu ROV Actuator - 1/2" - MP Valve 20K PSI	25,4	165	38,1	140	1/2" MP F	4,2 Kg

Ordering Codes

Type	Ordering Number	Pressure Rating	Porting (Female)
Alu ROV Actuator - 1/4" Ball Valve 500Bar	110015	500Bar (7.250PSI)	1/4" BSPP
Alu ROV Actuator - 3/8" Ball Valve 500Bar	109895	500Bar (7.250PSI)	3/8" BSPP
Alu ROV Actuator - 1/2" Ball Valve 500Bar	109925	500Bar (7.250PSI)	1/2" BSPP
Alu ROV Actuator - 3/4" Ball Valve 400Bar	109966	400Bar (5.800PSI)	3/4" BSPP
Alu ROV Actuator - 1" Ball Valve 350Bar	109949	345 Bar (5.000PSI)	1" BSPP
Alu ROV Actuator - 1-1/4" Ball Valve 350Bar	110001	345 Bar (5.000PSI)	1-1/4" BSP
Alu ROV Actuator - 1/4" MP Valve 20K PSI	109982	1379 Bar (20.000PSI)	1/4" MP SF250CX
Alu ROV Actuator - 3/8" MP Valve 20K PSI	110019	1379 Bar (20.000PSI)	3/8" MP SF375CX
Alu ROV Actuator - 9/16" MP Valve 20K PSI	109968	1379 Bar (20.000PSI)	9/16" MP SF562CX20